



FESTIVAL STAGE – 10M CLEAR-SPAN STAGE

By combining our proprietary staging system **Event-deck** with an orbital roof system the result is our 10m wide, clear-span, outdoor Festival Stage structure.

- Being modular, the covered stage area can either be 10m wide x 5m deep or 10m wide x 7.5m deep.
- Being 'flat pack' and constructed on site allows for use in confined spaces.
- Suitable for use throughout the year.
- Equally at home constructed on urban, or, greenfield sites - upon grass or hardstanding.
- The stage is perfectly levelled on height adjustable leg jacks.
- Anchorage is achieved either by using ground plates and marquee stakes or water ballast.
- Optional back or side door stage access.
- Modular treads as required up to the above or, to the front of the stage.
- A back-stage ramp for equipment if required.
- Side walls [5m wide & 2.5m] can be removed for wider viewing angles.
- An 'eyelid' can be included to extend the canopy further.
- The Roof has a payload of 500kg over 4 points.
- If a smaller stage is required, we have a 6m wide version.
- Being 'flat pack' and constructed on site allows for use in confined spaces where vehicles cannot reach.
- Stage surface black, Hexagrip 18mm ply.

The stage is perfect for;

- Concerts.
- Variety Performances.
- Experiential demonstrations.
- Rallies
- Carol Concerts.
- Switching on of Christmas lights



10m x 7.5m Festival Stage with eyelid and side Video Wall Trusses – Olympic Park



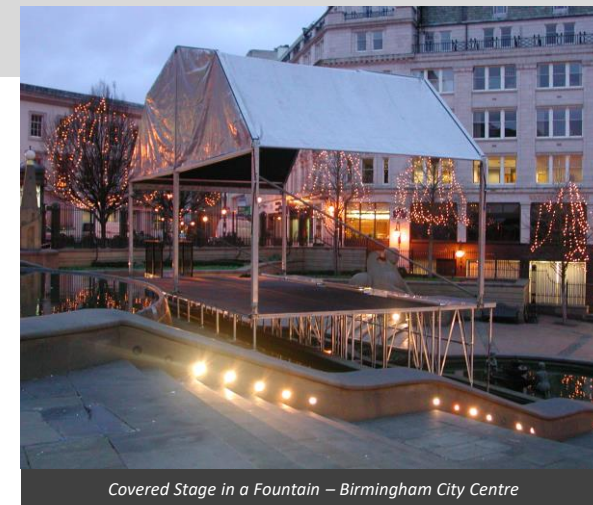
10m x 7.5m Festival Stage with eyelid



FOH 4m x 3m Control Position. Roll up, clear front windows – each 1.5m x 90cms



10m x 5m Festival Stage in a Fountain - Birmingham



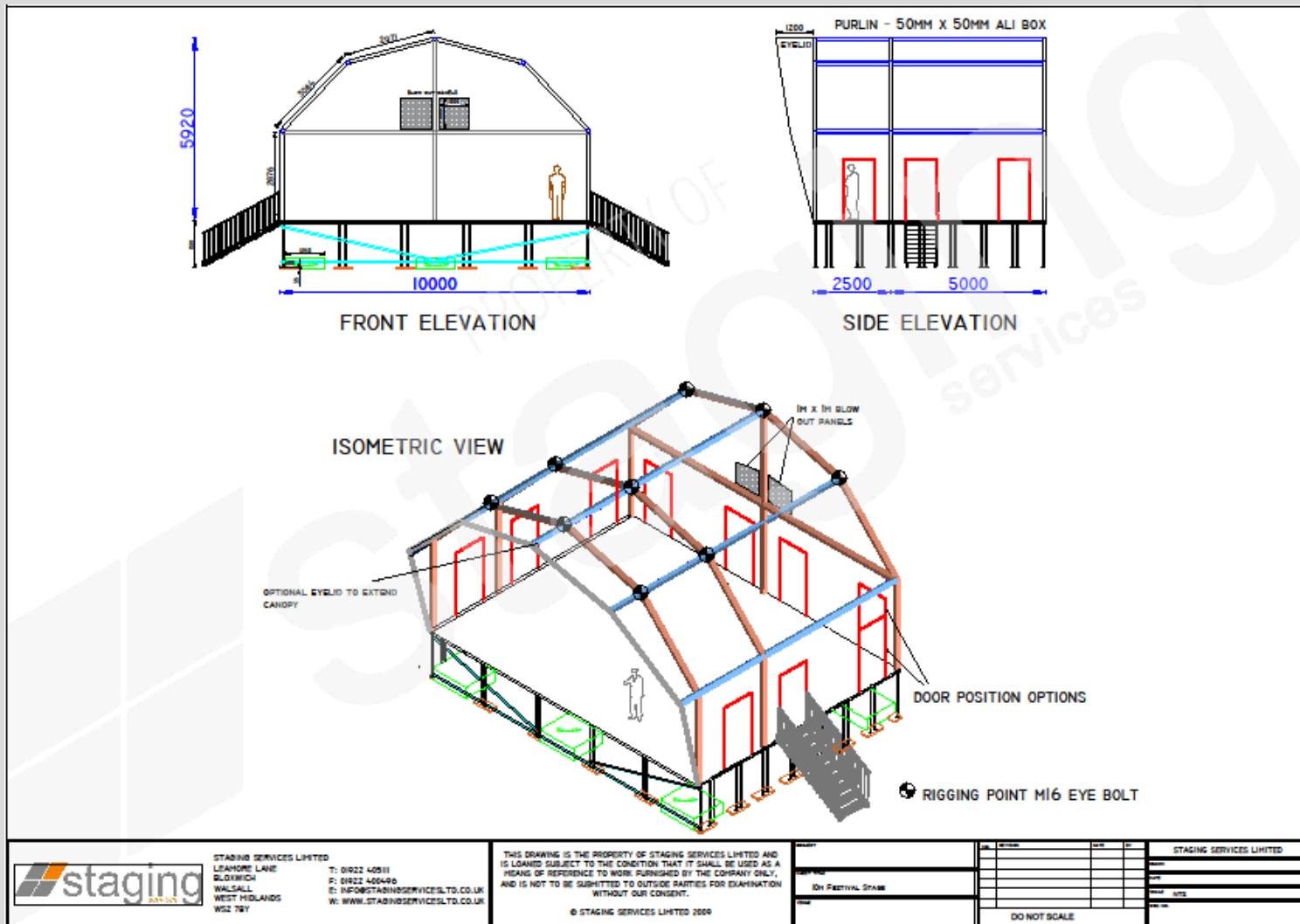
Covered Stage in a Fountain – Birmingham City Centre

CAN WE ALSO HELP YOU WITH ?

- **Venue Surveys.** If we don't have the venue or site on our AutoCad system, we will undertake a survey and create plans and elevations.
- **Plans and Design Layouts.**
- **Covered PA wings.**
- **Covered FOH position 4m x 3m**
- **On stage risers – instrument and choral**
- **Delay speaker platforms**
- **PA systems.**
- **Stage Lighting.**
- **Mains Power Distribution.**
- **Trussing.**
- **Printing of banners and speaker scrims**



FESTIVAL STAGE – 10M CLEARSPAN STAGE



10m x 7.5m Festival Stage – Warwick Castle



10m x 7.5m Festival Stage, Rear Elevation – Warwick Castle



10m x 7.5m Festival Stage – Olympic Park

T: +44 (0)1922 405111 – E: info@stagingservicesltd.co.uk W: stagingservicesltd.co.uk

